

## Analysis of Variance Report

Page/Date/Time 1 9/2/2004 7:47:44 AM  
Database C:\Documents and Settings\Da ... DAVID\Densidad transectos.S0  
Response T3\_D\_Intervenido

### Analysis of Variance Table

Source		Sum of	Mean		Prob	Power
Term	DF	Squares	Square	F-Ratio	Level	(Alpha=0.05)
A: T2_D_No_interv.	4	0.4453333	0.1113333	139.17	0.063481	0.569813
S	1	0.0008	0.0008			
Total (Adjusted)	5	0.4461333				
Total	6					

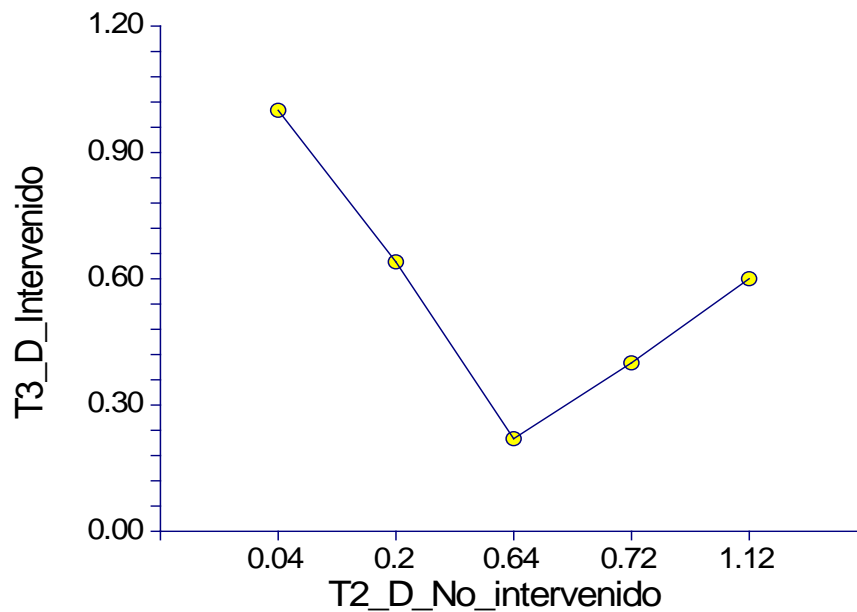
\* Term significant at alpha = 0.05

### Means and Effects Section

Term	Count	Mean	Standard Error	Effect
All	6	0.5133333		0.572
A: T2_D_No_intervenido				
0.04	1	1	2.828427E-02	0.428
0.2	1	0.64	2.828427E-02	0.068
0.64	2	0.22	0.02	-0.352
0.72	1	0.4	2.828427E-02	-0.172
1.12	1	0.6	2.828427E-02	0.028

### Plots Section

Means of T3\_D\_Intervenido



## Analysis of Variance Report

Page/Date/Time 2 9/2/2004 7:47:45 AM  
Database C:\Documents and Settings\Da ... DAVID\Densidad transectos.S0  
Response T4\_D\_Intervenido

### Analysis of Variance Table

Source		Sum of	Mean		Prob	Power
Term	DF	Squares	Square	F-Ratio	Level	(Alpha=0.05)
A: T2_D_No_interv.	4	3.093333E-02	7.733333E-03	0.15	0.938222	0.053677
S	1	0.0512	0.0512			
Total (Adjusted)	5	8.213333E-02				
Total	6					

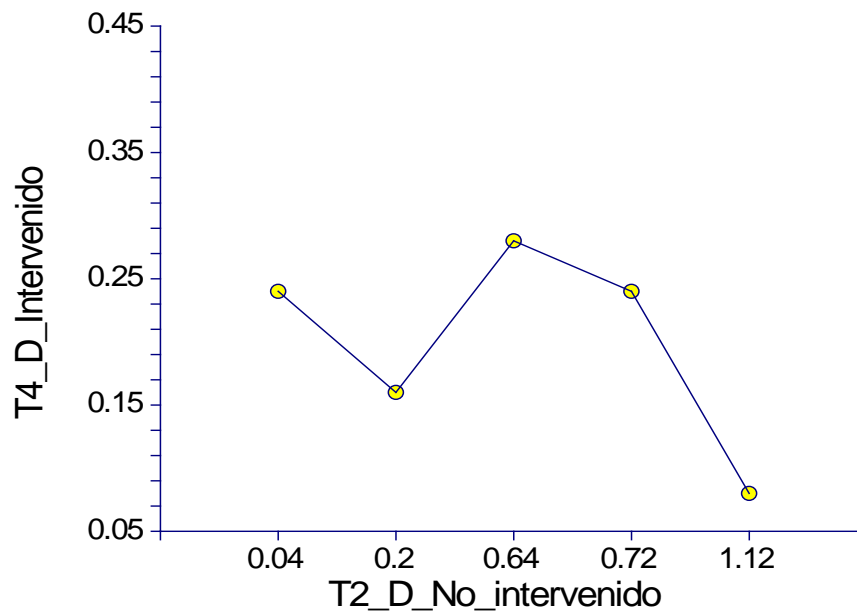
\* Term significant at alpha = 0.05

### Means and Effects Section

Term	Count	Mean	Standard Error	Effect
All	6	0.2133333		0.2
A: T2_D_No_intervenido				
0.04	1	0.24	0.2262742	0.04
0.2	1	0.16	0.2262742	-0.04
0.64	2	0.28	0.16	0.08
0.72	1	0.24	0.2262742	0.04
1.12	1	0.08	0.2262742	-0.12

### Plots Section

Means of T4\_D\_Intervenido



## Analysis of Variance Report

Page/Date/Time 3 9/2/2004 7:47:45 AM  
Database C:\Documents and Settings\Da ... DAVID\Densidad transectos.S0  
Response T6\_D\_Intervenido

### Analysis of Variance Table

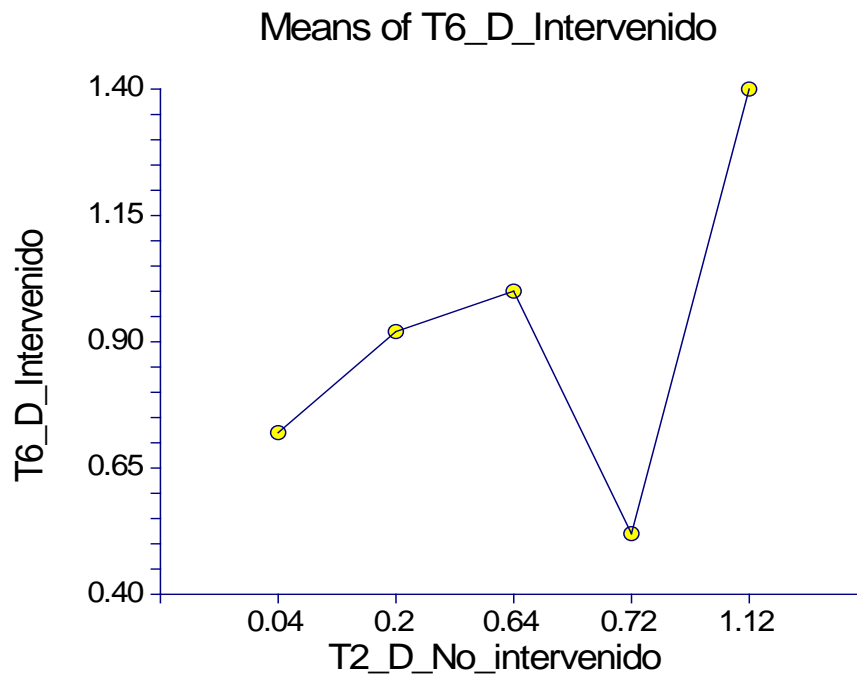
Source		Sum of	Mean		Prob	Power
Term	DF	Squares	Square	F-Ratio	Level	(Alpha=0.05)
A: T2_D_No_interv.	4	0.4429333	0.1107333	3.84	0.363086	0.113961
S	1	0.0288	0.0288			
Total (Adjusted)	5	0.4717333				
Total	6					

\* Term significant at alpha = 0.05

### Means and Effects Section

Term	Count	Mean	Standard Error	Effect
All	6	0.9266667		0.912
A: T2_D_No_intervenido				
0.04	1	0.72	0.1697056	-0.192
0.2	1	0.92	0.1697056	0.008
0.64	2	1	0.12	0.088
0.72	1	0.52	0.1697056	-0.392
1.12	1	1.4	0.1697056	0.488

### Plots Section



## Analysis of Variance Report

Page/Date/Time 4 9/2/2004 7:47:45 AM  
Database C:\Documents and Settings\Da ... DAVID\Densidad transectos.S0  
Response T7\_D\_Intervenido

### Analysis of Variance Table

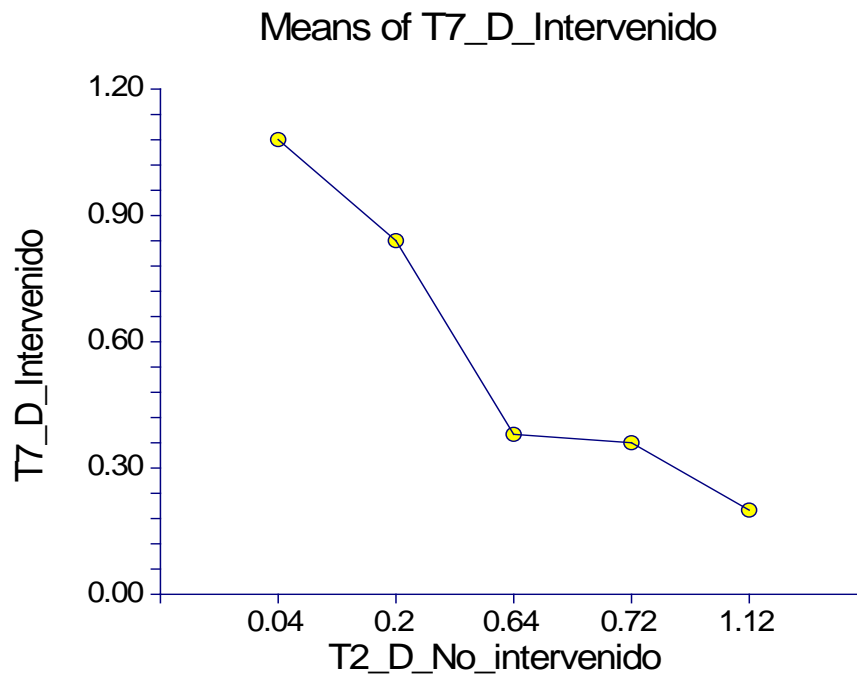
Source		Sum of	Mean		Prob	Power
Term	DF	Squares	Square	F-Ratio	Level	(Alpha=0.05)
A: T2_D_No_interv.	4	0.5808	0.1452	7.26	0.270642	0.149830
S	1	0.02	0.02			
Total (Adjusted)	5	0.6008				
Total	6					

\* Term significant at alpha = 0.05

### Means and Effects Section

Term	Count	Mean	Standard Error	Effect
All	6	0.54		0.572
A: T2_D_No_intervenido				
0.04	1	1.08	0.1414214	0.508
0.2	1	0.84	0.1414214	0.268
0.64	2	0.38	0.1	-0.192
0.72	1	0.36	0.1414214	-0.212
1.12	1	0.2	0.1414214	-0.372

### Plots Section



## Analysis of Variance Report

Page/Date/Time 5 9/2/2004 7:47:45 AM  
Database C:\Documents and Settings\Da ... DAVID\Densidad transectos.S0  
Response T8\_D\_Intervenido

### Analysis of Variance Table

Source		Sum of	Mean		Prob	Power
Term	DF	Squares	Square	F-Ratio	Level	(Alpha=0.05)
A: T2_D_No_interv.	4	1.4816	0.3704	28.94	0.138427	0.283693
S	1	0.0128	0.0128			
Total (Adjusted)	5	1.4944				
Total	6					

\* Term significant at alpha = 0.05

### Means and Effects Section

Term	Count	Mean	Standard Error	Effect
All	6	0.6		0.664
A: T2_D_No_intervenido				
0.04	1	1.64	0.1131371	0.976
0.2	1	0.6	0.1131371	-0.064
0.64	2	0.28	0.08	-0.384
0.72	1	0.16	0.1131371	-0.504
1.12	1	0.64	0.1131371	-0.024

### Plots Section

Means of T8\_D\_Intervenido

